

# STRATEGIC PLAN

---

# GOALS AND INITIATIVES



REVISED  
AUGUST 2005

# University of Wisconsin-Madison

---

©UNIVERSITY OF WISCONSIN-MADISON BOARD OF REGENTS, 2005

---

This document consists of diagrams illustrating example initiatives for each of the campus priorities.

For additional copies of this document (download printable version) or for more information on the strategic plan, visit [www.chancellor.wisc.edu/strategicplan/](http://www.chancellor.wisc.edu/strategicplan/) or contact the Office of Quality Improvement, 608-262-6843, [mcotter@wisc.edu](mailto:mcotter@wisc.edu).

---

## TABLE OF CONTENTS

---

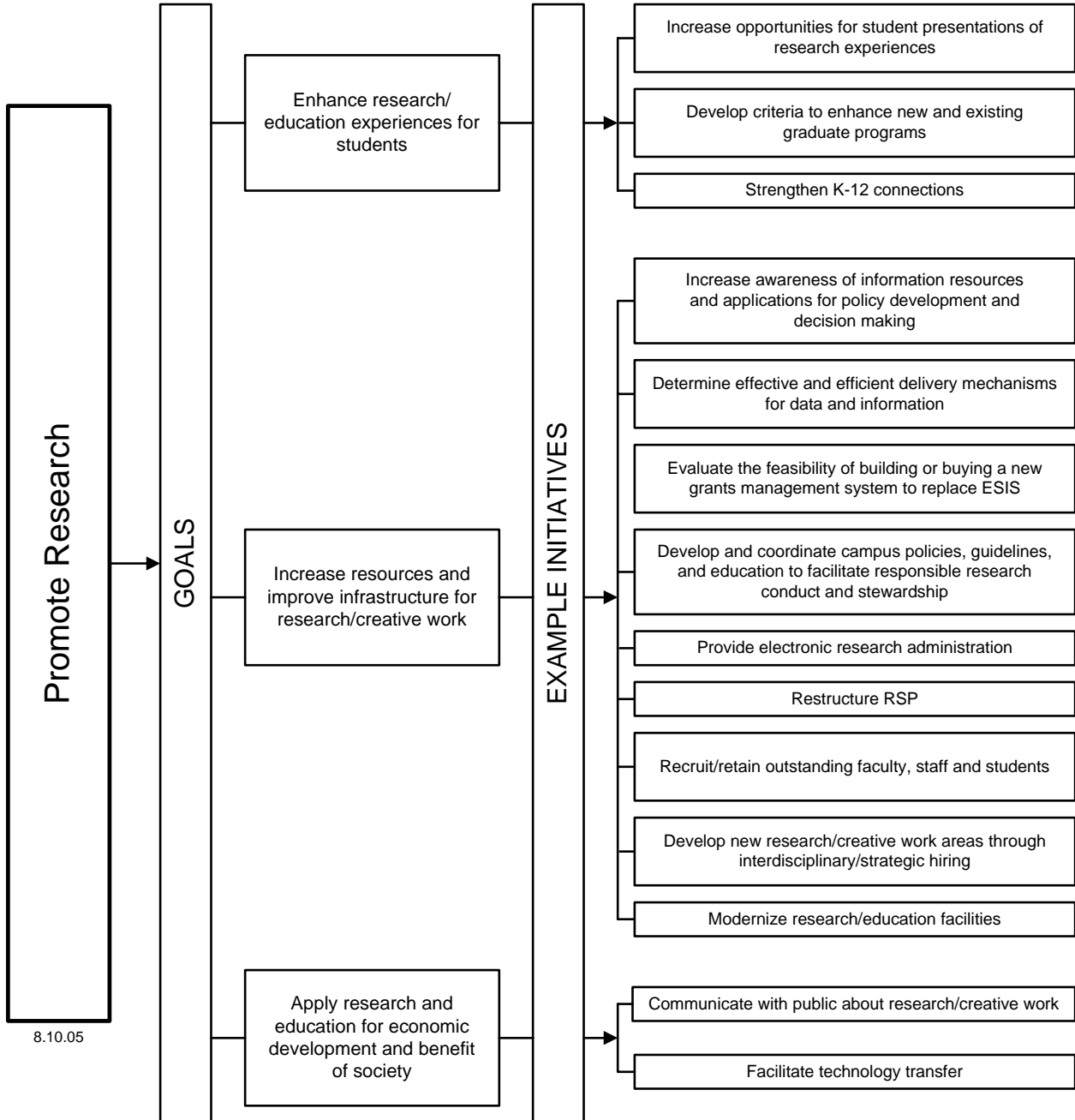
<b>UW-MADISON MISSION, OBJECTIVE, PRIORITIES</b> .....	3
<b>PROMOTE RESEARCH</b> .....	4
<b>ADVANCE LEARNING</b> .....	
Undergraduate Education.....	5
Graduate and Professional Education.....	6
Lifelong Learning.....	7
<b>ACCELERATE INTERNATIONALIZATION</b> .....	8
<b>AMPLIFY THE WISCONSIN IDEA</b> .....	9
Technology Transfer.....	10
<b>NURTURE HUMAN RESOURCES</b> .....	
Students.....	11
Employees.....	12
Professional Development.....	13

# UW-Madison Strategic Plan



# PROMOTE RESEARCH

Martin Cadwallader, Vice Chancellor for Research and Dean of the Graduate School  
 Tel: 608/262-1044 Fax: 608/262-5134 E-mail: [cadwallader@bascom.wisc.edu](mailto:cadwallader@bascom.wisc.edu)



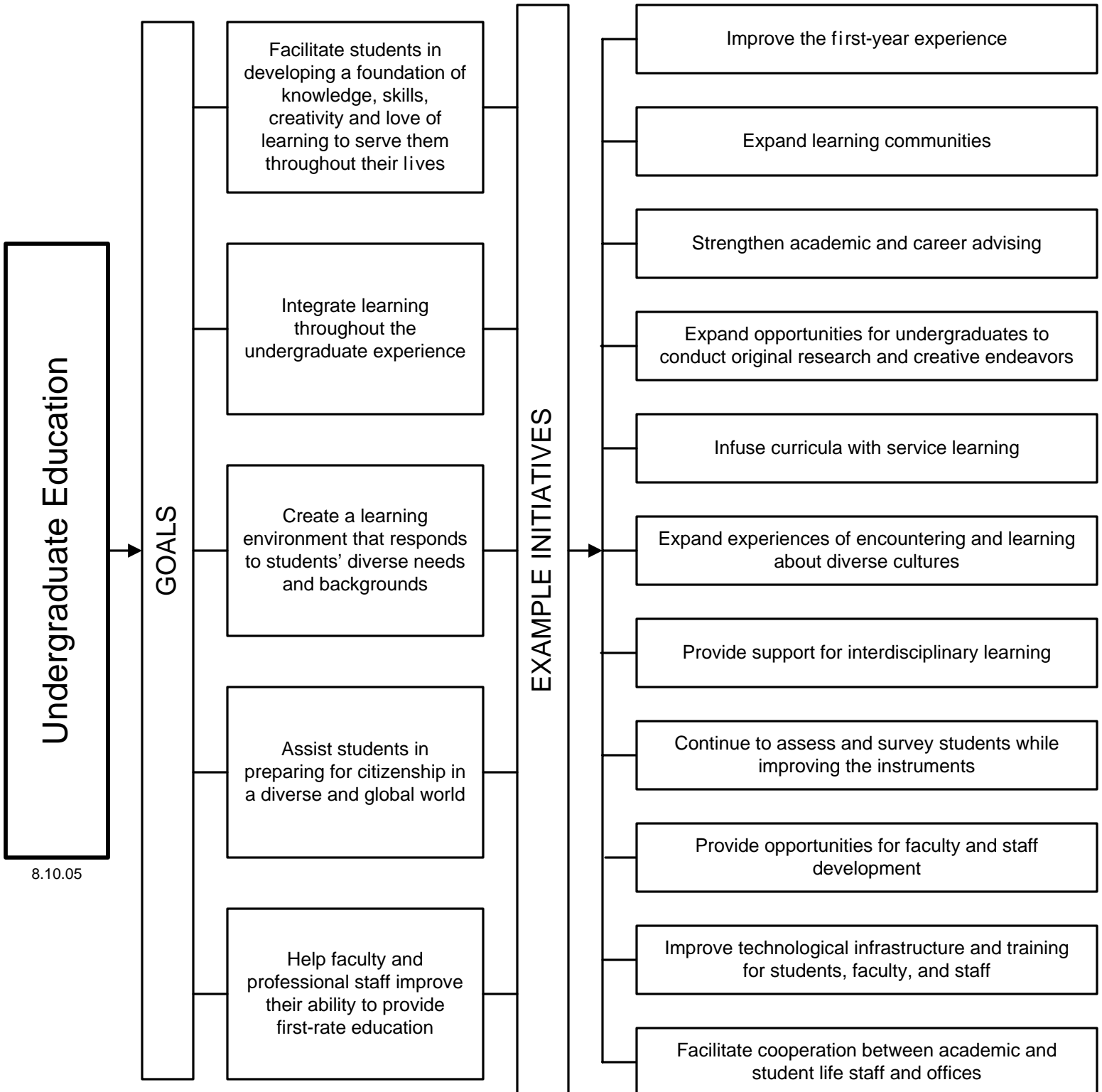
# ADVANCE LEARNING - Undergraduate Education

## Advance Learning

Peter Spear, Provost and Vice Chancellor for Academic Affairs  
Tel: 608/262-1304 Fax: 608/265-3324 E-mail: [pspear@wisc.edu](mailto:pspear@wisc.edu)

## Undergraduate Education

Virginia Sapiro, Associate Vice Chancellor for Teaching and Learning  
Tel: 608/262-5246 Fax: 608/265-3353 E-mail: [vsapiro@wisc.edu](mailto:vsapiro@wisc.edu)



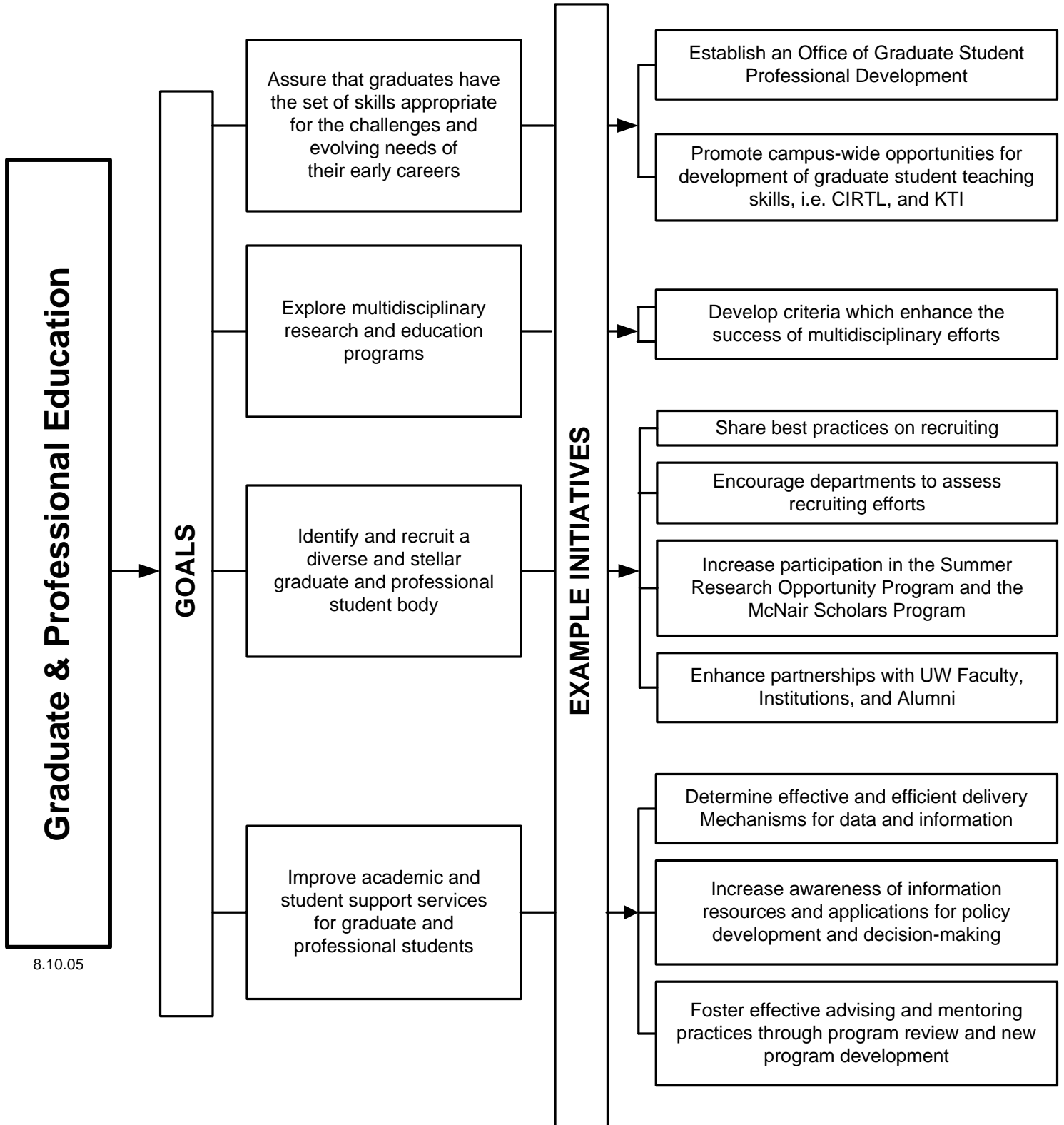
# ADVANCE LEARNING - Graduate and Professional Education

## Advance Learning

Peter Spear, Provost and Vice Chancellor for Academic Affairs  
Tel: 608/262.1304 Fax: 608/265.3324 Email: [pspear@wisc.edu](mailto:pspear@wisc.edu)

## Graduate and Professional Education

Miriam Simmons, Assistant Dean, Graduate Education  
Tel: 608/262.1044 Fax: 608/265.6742 Email: [msimmons@bascom.wisc.edu](mailto:msimmons@bascom.wisc.edu)



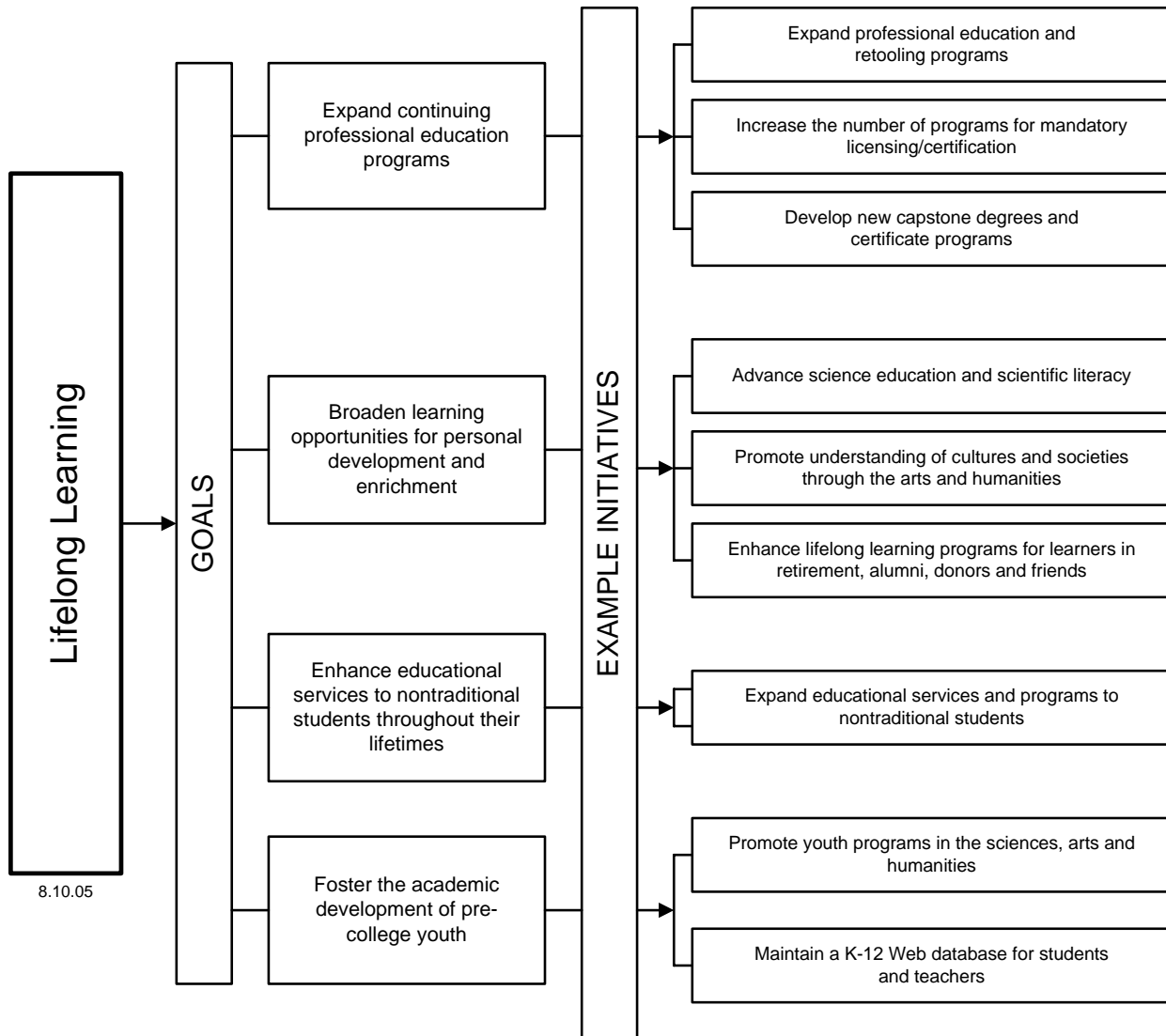
# ADVANCE LEARNING - Lifelong Learning (Continuing and Outreach Education)

## Advance Learning

Peter Spear, Provost and Vice Chancellor for Academic Affairs  
Tel: 608/262-1304 Fax: 608/265-3324 E-mail: [pspear@wisc.edu](mailto:pspear@wisc.edu)

## Lifelong Learning

Howard Martin, Associate Vice Chancellor for Extended Programs  
Tel: 608/262-5821 Fax: 608/265-5627 E-mail: [hmartin@dcs.wisc.edu](mailto:hmartin@dcs.wisc.edu)

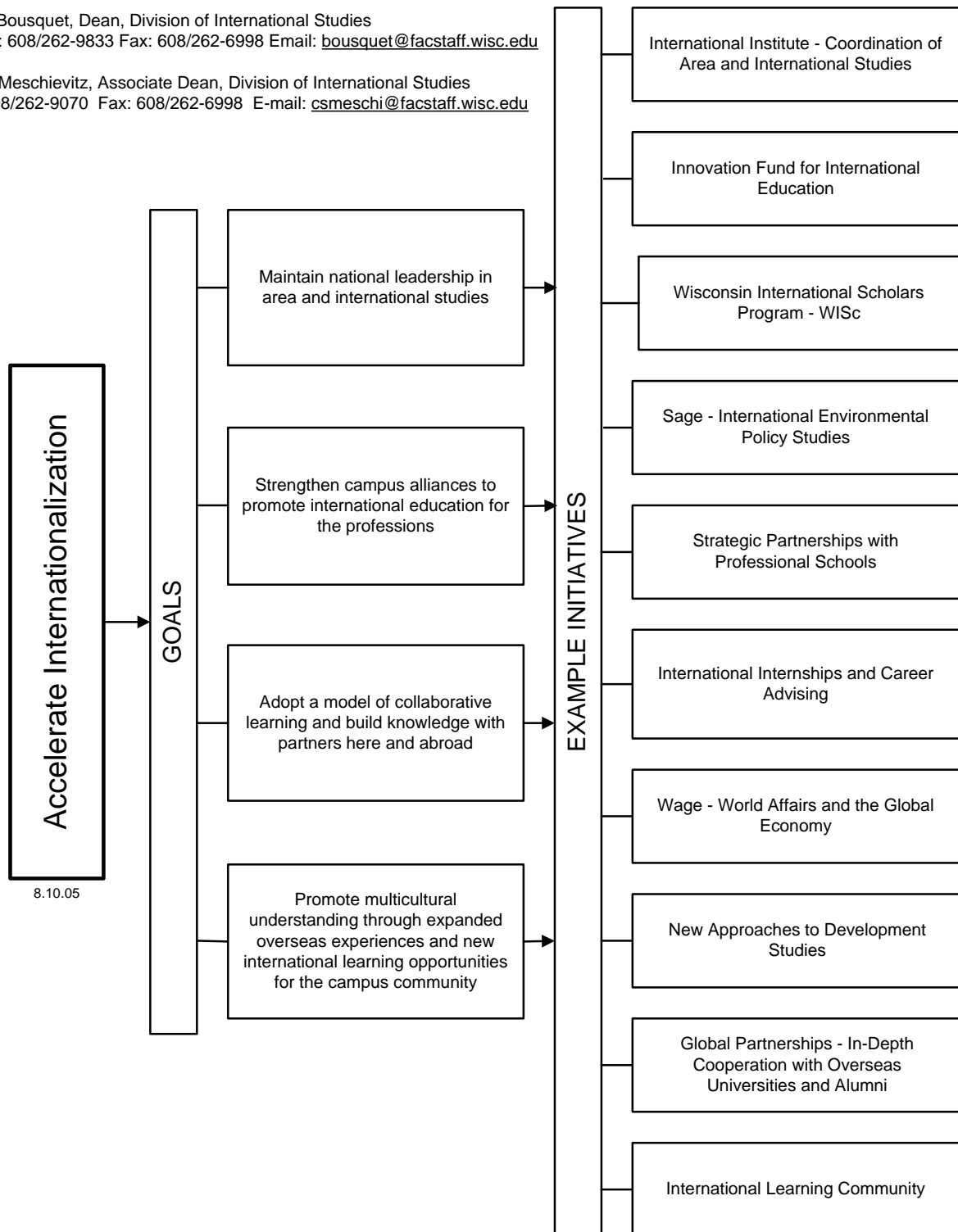


# ACCELERATE INTERNATIONALIZATION

Prepared by the Division of International Studies with the advice and consent of the International Assembly.

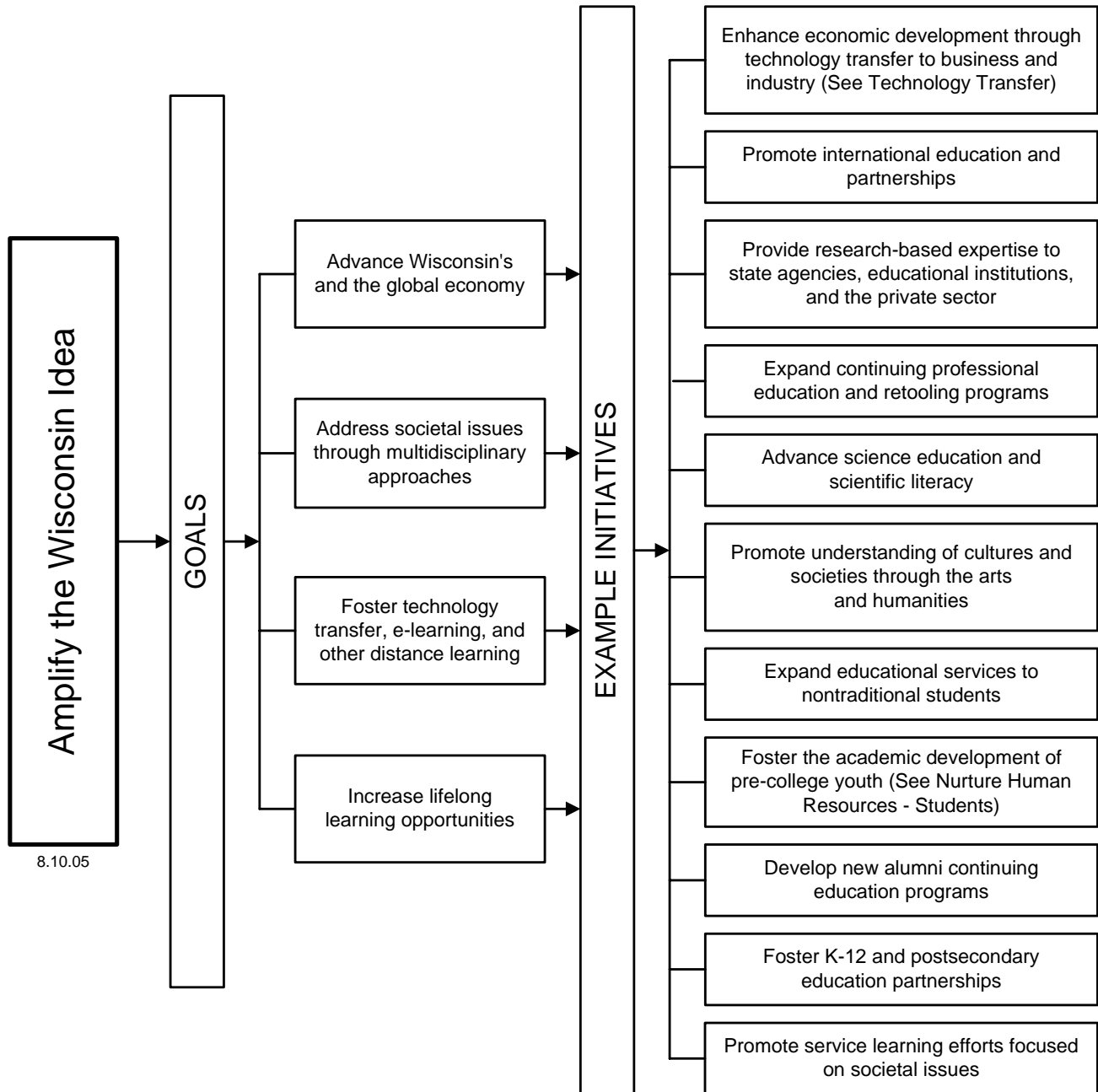
Gilles Bousquet, Dean, Division of International Studies  
 Phone: 608/262-9833 Fax: 608/262-6998 Email: [bousquet@facstaff.wisc.edu](mailto:bousquet@facstaff.wisc.edu)

Cathy Meschievitz, Associate Dean, Division of International Studies  
 Tel: 608/262-9070 Fax: 608/262-6998 E-mail: [csmeschi@facstaff.wisc.edu](mailto:csmeschi@facstaff.wisc.edu)



# AMPLIFY THE WISCONSIN IDEA

Howard Martin, Associate Vice Chancellor for Extended Programs  
 Tel: 608/262-5821 Fax: 608/265-5627 E-mail: [hmartin@dcs.wisc.edu](mailto:hmartin@dcs.wisc.edu)



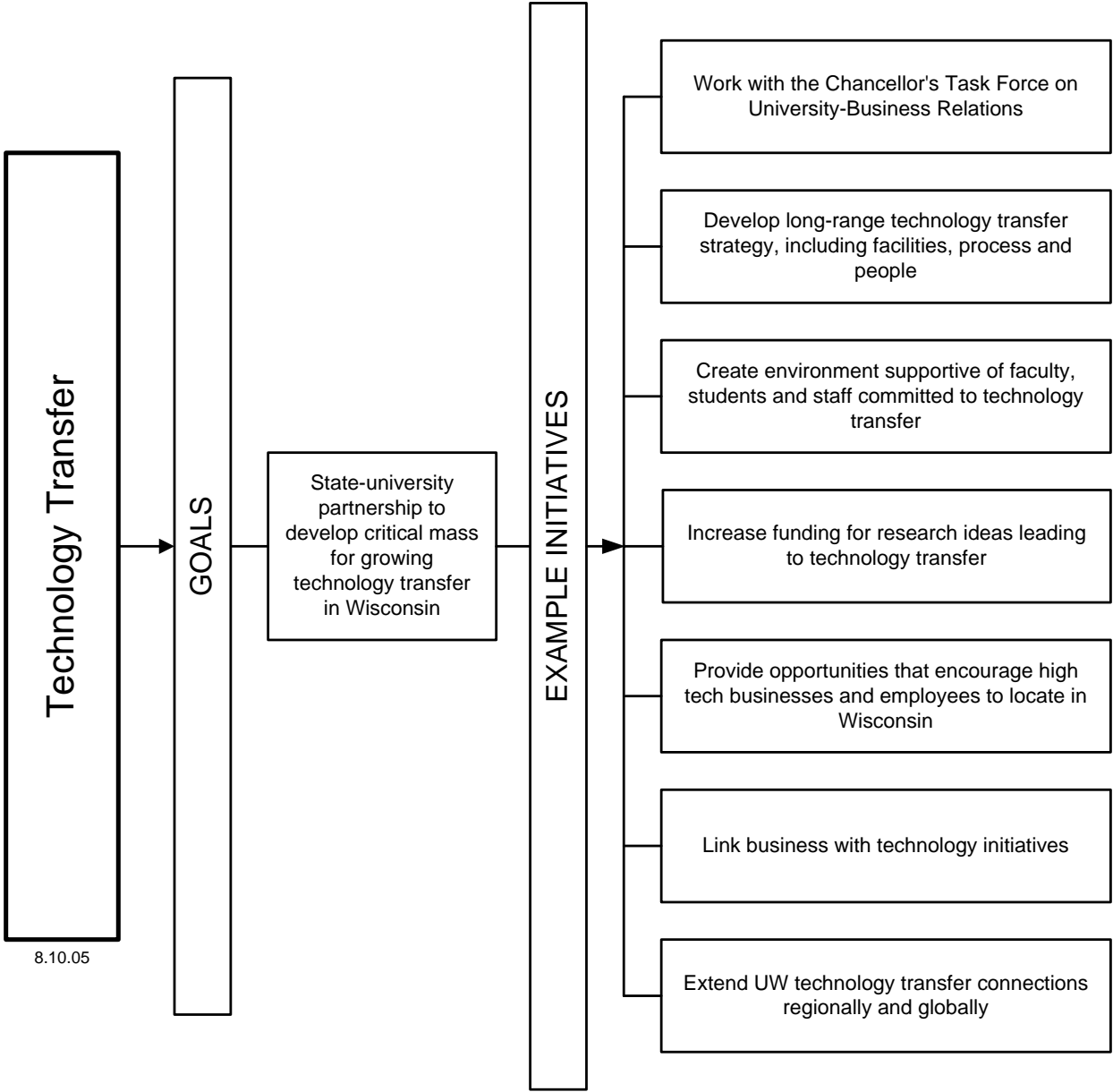
# AMPLIFY THE WISCONSIN IDEA - Technology Transfer

## Amplify the Wisconsin Idea

Howard Martin, Associate Vice Chancellor for Extended Programs  
Tel: 608/262-5821 Fax: 608/265-5627 E-mail: [hmartin@dcs.wisc.edu](mailto:hmartin@dcs.wisc.edu)

## Technology Transfer

Charles Hoslet, Sr. Special Assistant to the Chancellor/Managing Director, Office of Corporate Relations  
Tel: 608/263-2840 Fax: 608/263-2841 E-mail: [hoslet@bascom.wisc.edu](mailto:hoslet@bascom.wisc.edu)



# NURTURE HUMAN RESOURCES – Students

## Students

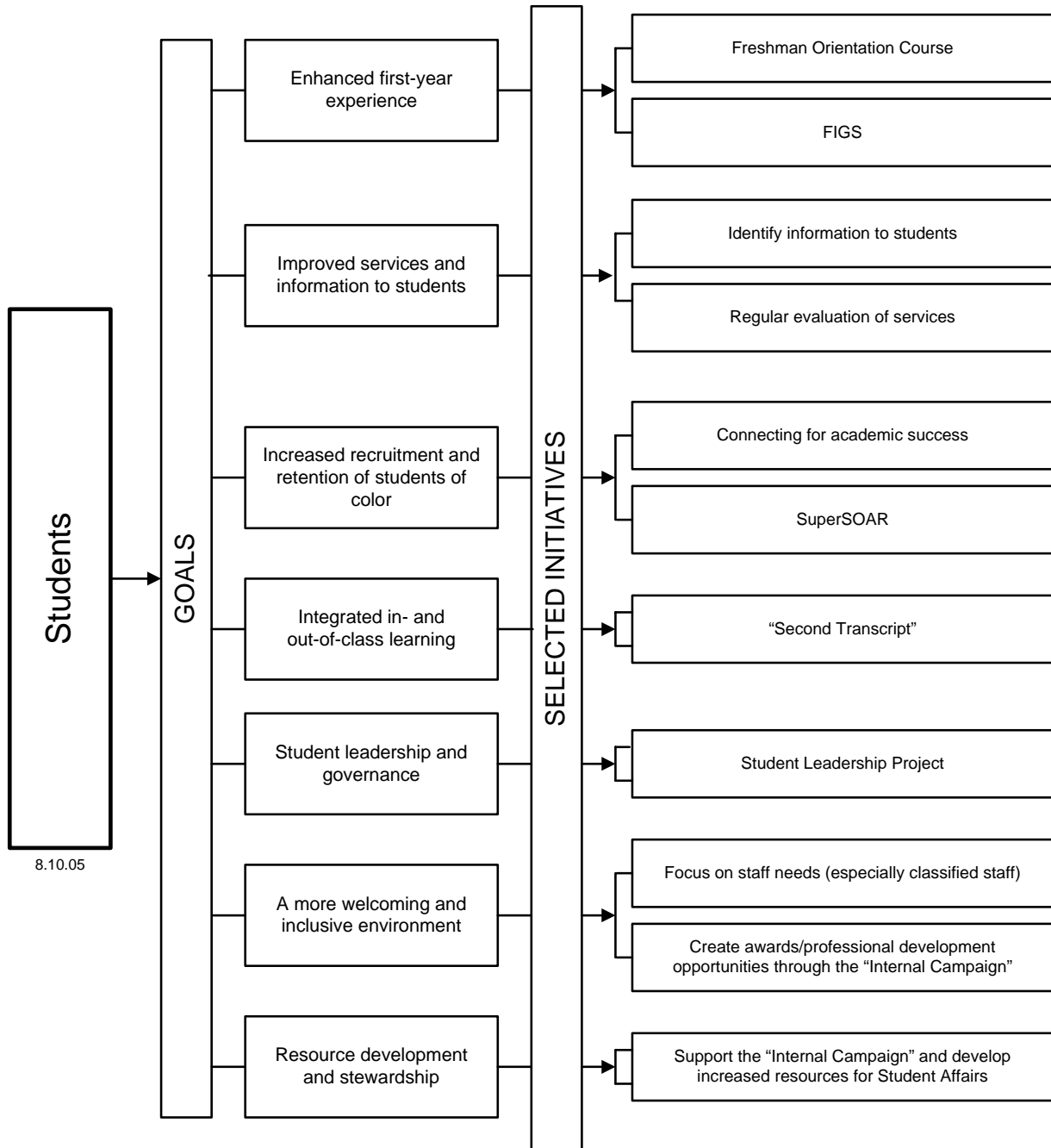
Lori Berquam, Interim Dean of Students  
 Tel: 608/263-5702 Fax: 608/265-5646 E-mail: [lberquam@bascom.wisc.edu](mailto:lberquam@bascom.wisc.edu)

## Diversity

Bernice Durand, Associate Vice Chancellor, Administration  
 Tel: 608/262-5246 Fax: 608/265-3353 E-mail: [bdurand@wisc.edu](mailto:bdurand@wisc.edu)

## Nurture Human Resources

Peter Spear, Provost and Vice Chancellor for Academic Affairs  
 Tel: 608/262-1304 Fax: 608/265-3324  
 E-mail: [pspear@wisc.edu](mailto:pspear@wisc.edu)



# NURTURE HUMAN RESOURCES - Employees

## Employees

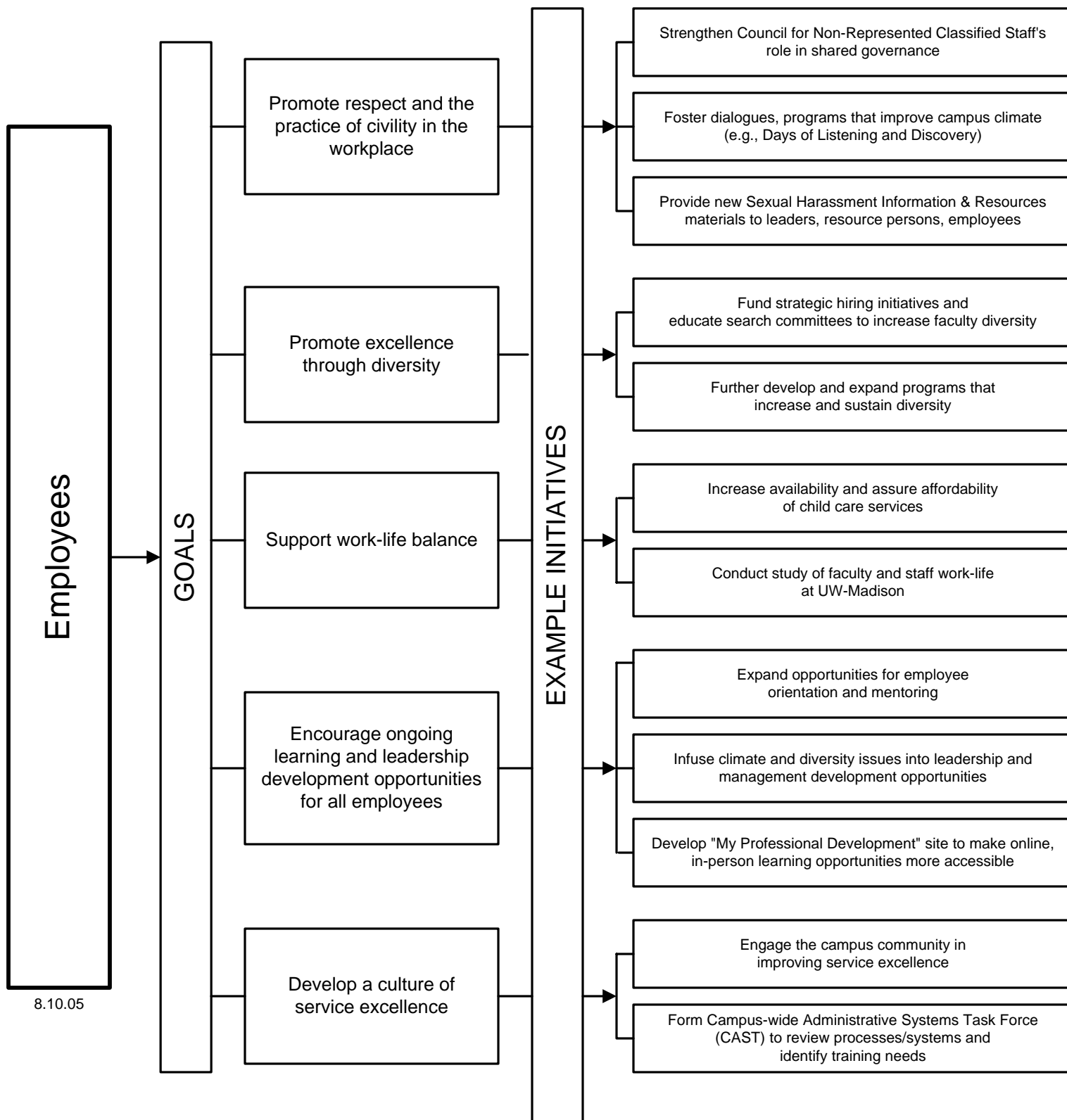
Laurie Beth Clark, Associate Vice Chancellor, Administration  
Tel: 608/262-5246 Fax: 608/265-3353 E-mail: [lbclark@wisc.edu](mailto:lbclark@wisc.edu)

## Diversity

Bernice Durand, Associate Vice Chancellor, Administration  
Tel: 608/262-5246 Fax: 608/265-3353 E-mail: [bdurand@wisc.edu](mailto:bdurand@wisc.edu)

## Nurture Human Resources

Peter Spear, Provost and Vice Chancellor  
for Academic Affairs  
Tel: 608/262-1304 Fax: 608/265-3324  
E-mail: [pspear@wisc.edu](mailto:pspear@wisc.edu)



8.10.05

# NURTURE HUMAN RESOURCES - Professional Development

## Nurture Human Resources

Peter Spear, Provost and Vice Chancellor for Academic Affairs  
Tel: 608/262-1304 Fax: 608/265-3324 E-mail: [pspear@wisc.edu](mailto:pspear@wisc.edu)

## Professional Development

Don Schutt, Director of Human Resource Development  
Tel: 608/263-1016 Fax: 608/265-5824 E-mail: [dschutt@bascom.wisc.edu](mailto:dschutt@bascom.wisc.edu)

